

MSP 226 Quick Start



- 1U Frame
- HDMI 1.3 Output
- H.264 Input
- Controlled by USB
- Preview via Webpage

CONTENT

Product Introduction	2
Packing Configuration	3
Hardware Orientation	4
Interface.....	4
Button Panel.....	4
Operating Instruction	5
System Connection.....	5
How to Work.....	5
Specification.....	6
Using Software	7
Installing Software.....	7
Using Software.....	12
Log in the Software.....	12
Web Links.....	13
Connect the Device.....	13
Output Set.....	15
Network Set.....	16
System Set.....	16
Factory Reset.....	17
Logout.....	18
Contact Information	19

Product Introduction

Easy connection of internet web streams to conventional video processing and display equipment is enabled with MSP 226. Connect H.264 internet streaming via IP to large displays with this decoder. MSP 226 offers two HDMI output channels and dual RJ45 connectors for IP input for connection from LAN/WAN.

Configuration of MSP 226 is made via a web browser interface, providing settings connection to web applications and video streams.

Packing Configuration

AC Power Cord



QC Declaration



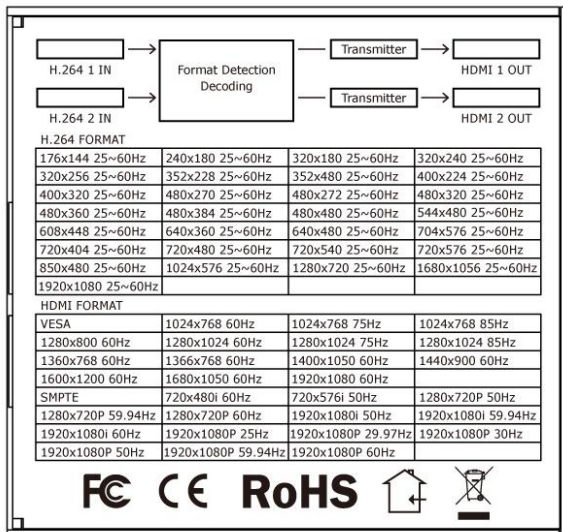
Hardware Orientation

Interface



No.	Interface	No.	Interface
1,2	HDMI Output HDMI-A Port	3	USB Control
4	Standard 12V/3A	5,6	H.264 Input RJ45

Button Panel



Operating Instruction

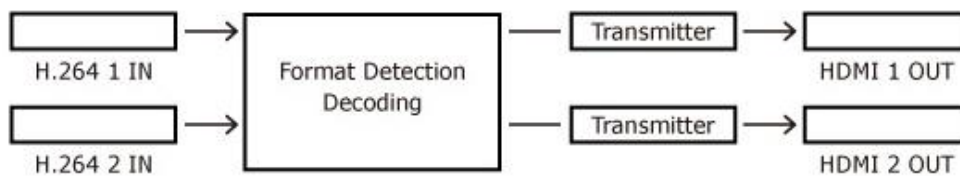
System Connection

Connect the H.264 input port of MSP 226 to the H.264 output port of MSP 225 with network cable.

Connect to the display device, video processor or matrix with HDMI interface to the HDMI output port of MSP 226 with HDMI cable.

Connect power cable to device and plug into wall socket. In order to avoid the damage of device, please use the standard power adapter.

How to Work



Specification

H.264 Input	
Number of Inputs	2
Connector	RJ45
Supported Resolution	176x144 240x180 320x180 320x240 320x256 352x228 352x480 400x224 400x320 480x270 480x272 480x320 480x360 480x384 480x480 544x480 608x448 640x360 640x480 704x576 720x404 720x480 720x540 720x576 850x480 1024x576 1280x720 1680x1056 1920x1080
Refresh Rates	10~60FPS
Encoding Protocols	H.264 baseline/main/high profile L4.2, MJPEG/JPEG baseline
Supported Standard	H.264/MPEG-4 AVC
HDMI Output	
Number of Outputs	2
Connector	HDMI-A
Supported Resolution	SMPTE: 480P60 576P50 720P50/60 1080i50/60 1080P24/25/30/50/60 VESA: 800x600x60 1024x768x60 1280x800x60 1280x1024x60 1366x768x60 1440x900x60 1600x1200x60 1680x1050x60 1920x1080x60
Signal Level	TMDS pwl, single pixel input,165MHz bandwidth
Supported Standard	HDMI 1.3
Extras	
Communication	USB
Power Supply	12V DC (via universal Plug Pack)
Working Environment	0°C~45°C
Stored Environment	10%~85%
Net Weight	0.27kg
Device Dimension	98mm x 92.9mm x 44mm
Product Warranty	3 years parts and labor warranty

Using Software

Installing Software

Environment Requirements:

Processor: 1 GHz or above 32 bit or 64 bit processor

Memory: 2 GB or more

Graphics: Support DirectX 9 128M or above (open AERO effect)

Hard disk space: Above 16G (primary partitions, NTFS format)

Monitor: Resolution must be 1280 x720 pixel or above (it can not display normally if the resolution is lower than 1280 x720)

Operating system: Windows 7 or above (full version, not Ghost version or compact version)



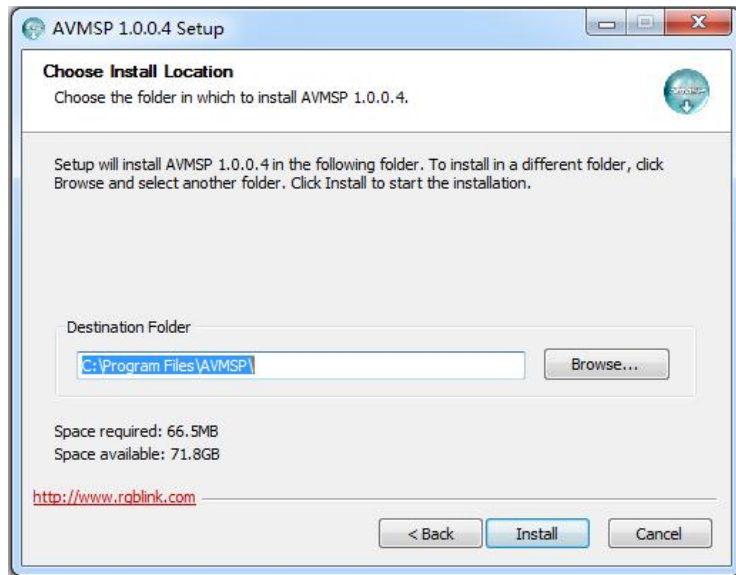
Double click `t_V1.0.0.4_` icon, it will pop-up the installer language box, select the language, for example, select “English”, and click “OK” to confirm.



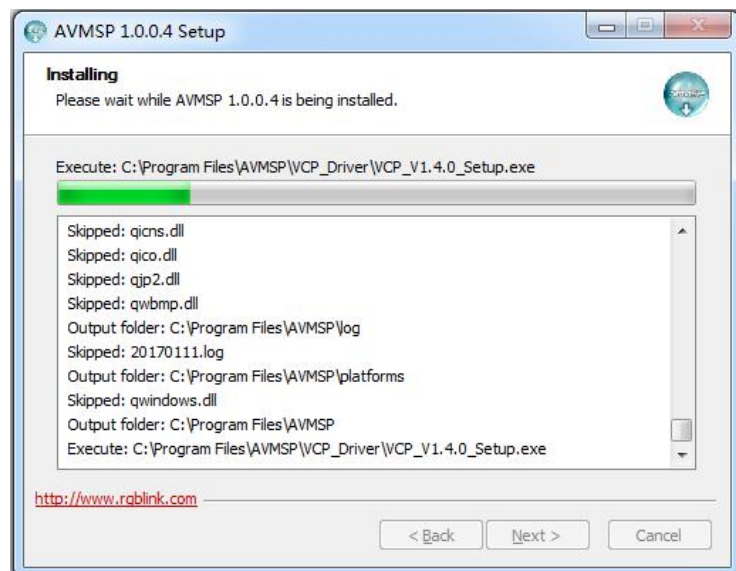
Click “Next” to install:



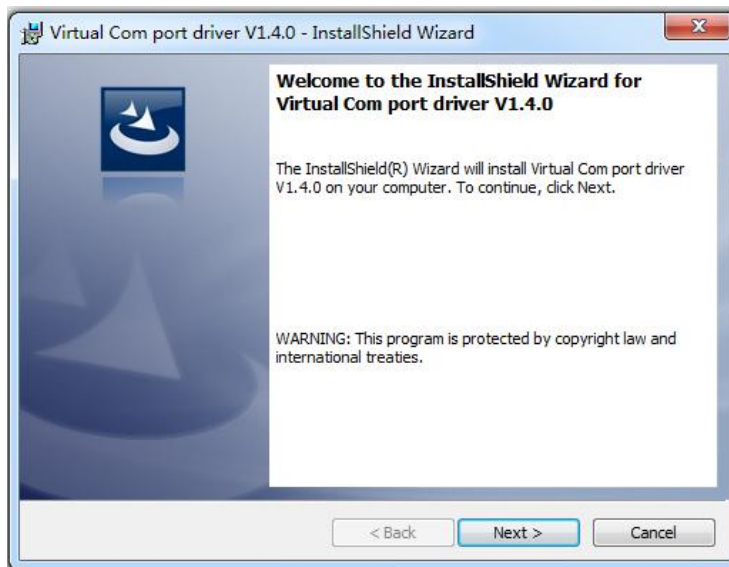
Select "Browse..." to select the MSP software install location:



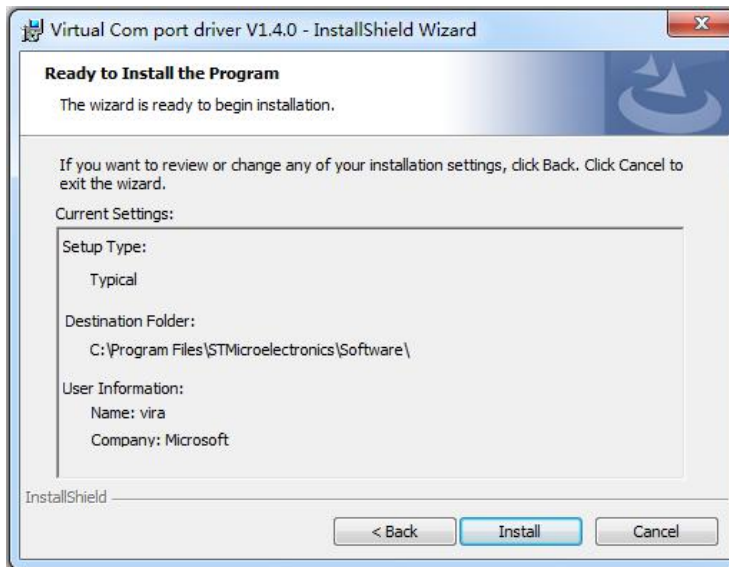
Click "Install":



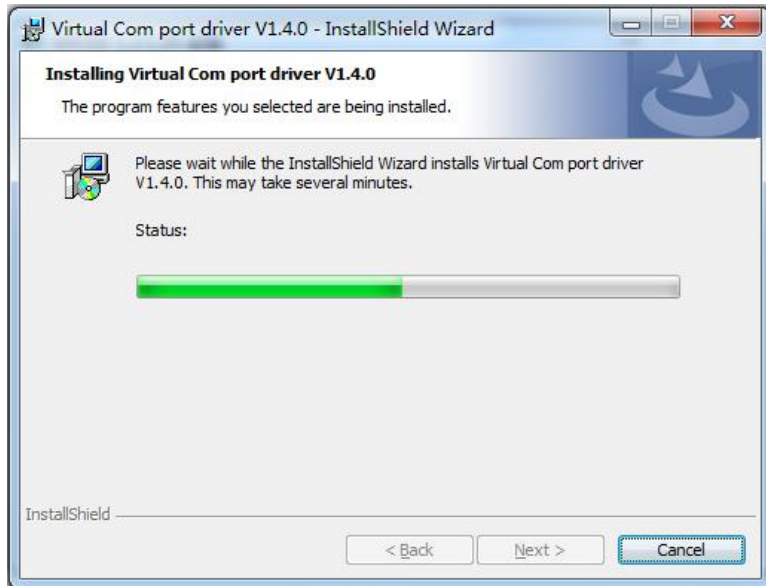
During installation, it will pop up the window of InstallShield Wizard for Virtual Com port:



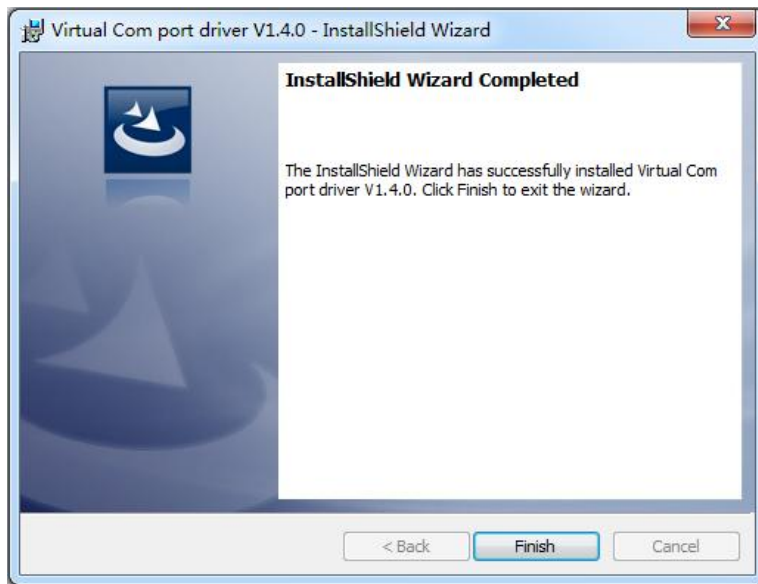
(1) If user install the MSP software for the first time, click "Next":



Then click "Install", as shown in the figure below:

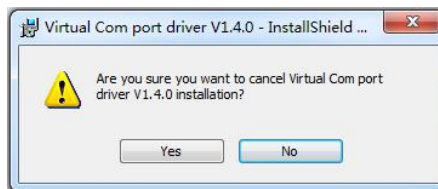


Click “Finish” and complete the installation, as shown in the figure below:

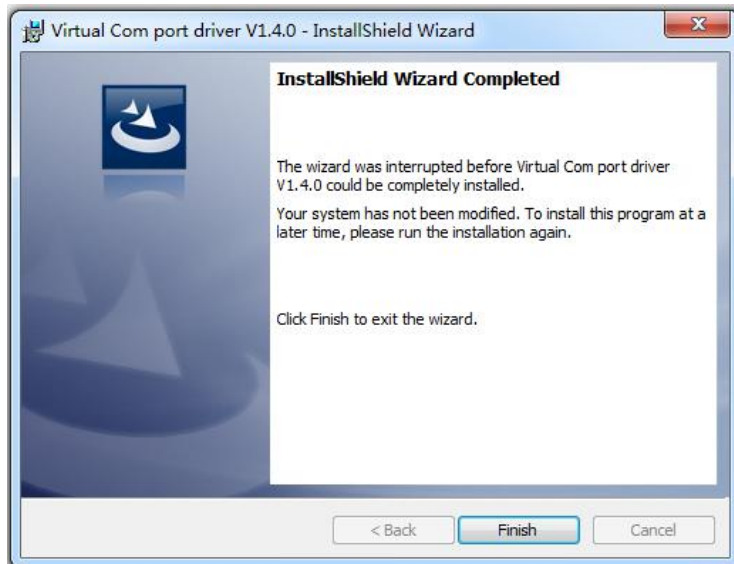


Then it will pop up the window of installation wizard for device driver, click “Next” to complete the installation.

(2) If user have installed the MSP software before, click “Cancel”, and it will pop up the window as below:



Click “Yes” to cancel installation.



Click "Finish" to exit installation.


Then it will pop up the window of installation wizard for device driver, click "Cancel" to exit the installation. Click "Finish" and is ready to run the MSP management software:

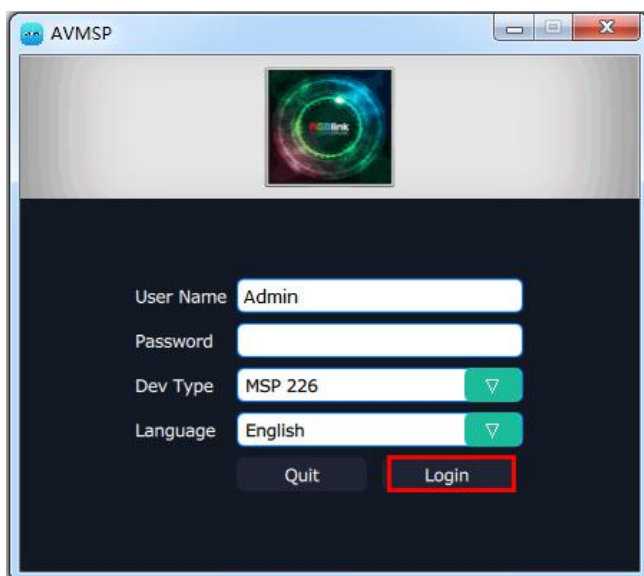


Using Software

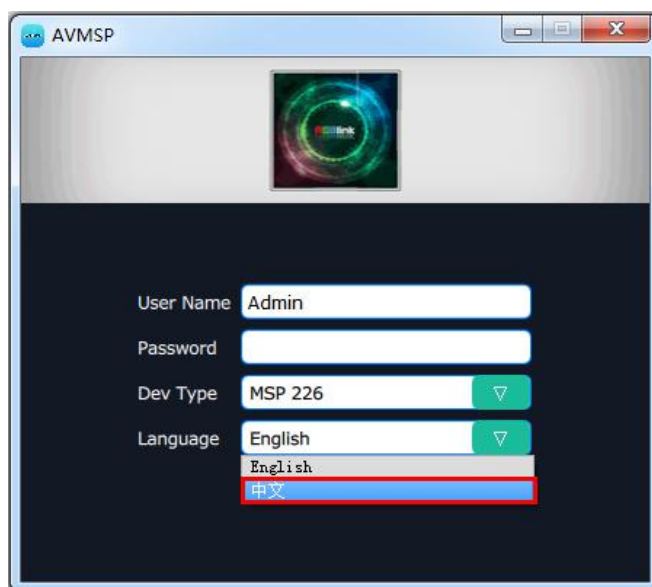
Log in the Software



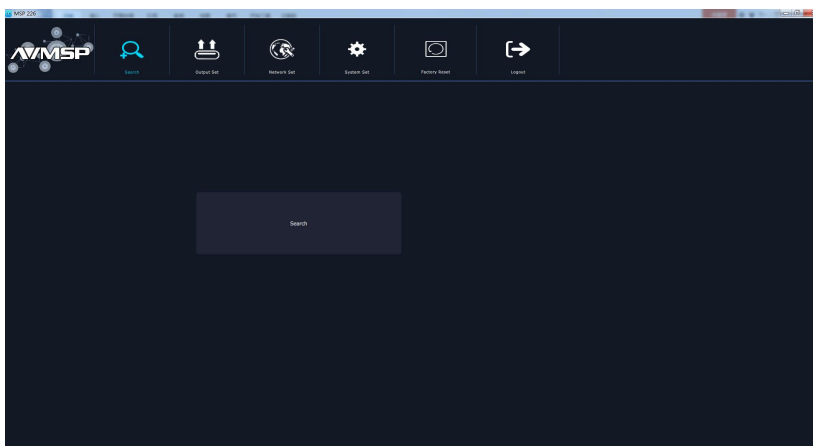
Double click the icon  on the desktop. Log in interface will be enter after opening, the user name is Admin, and there is no password, select “MSP 226”, and enter into the software by clicking “Login”.



If user want to change the language to Chinese, click the drop down arrow after “Language” and select “Chinese”, as shown in the figure below, then click “Login” to enter into the software.




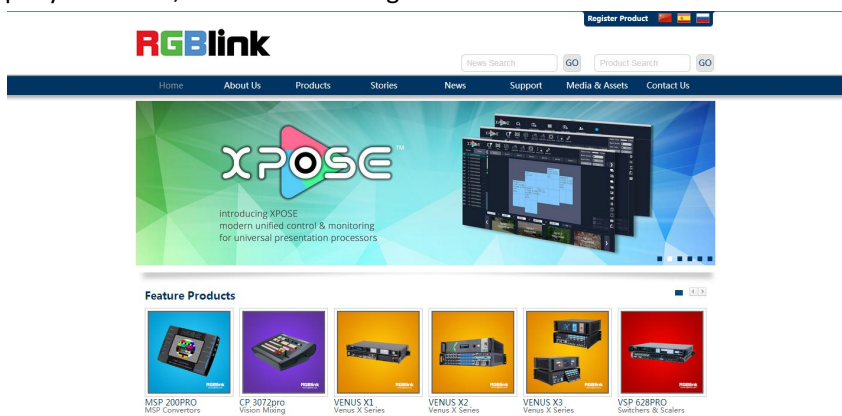
MSP management software interface is shown as follows.



MSP management software contains the functions including: web links, search, output set, network set, system set, factory reset and logout. In the following parts, we will introduce these in detail.

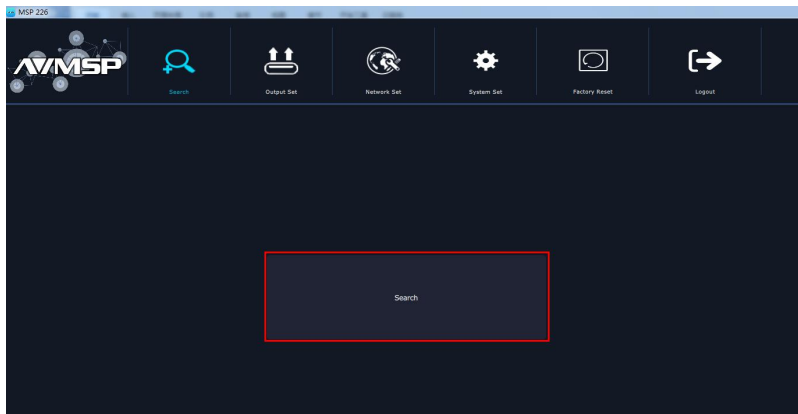
Web Links

MSP management software sets up the web links. Click the web links icon  on the top left corner, and enter the company's website, as shown in the figure below:



Connect the Device

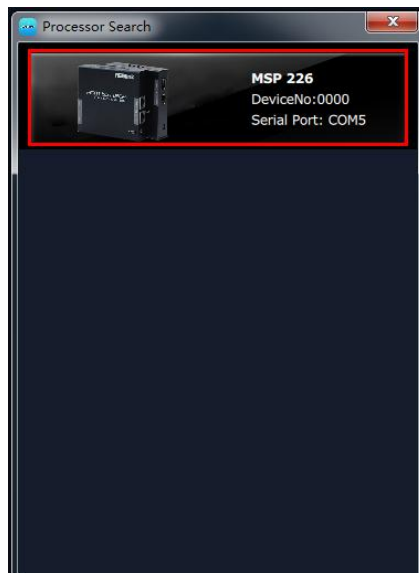
First, set up the device IP, and ensure the IP of the computer and device is on the same network segment. Connect the MSP management software to the computer with the network cable and power up the device. Then, click the shortcut "Search" on the operation interface.



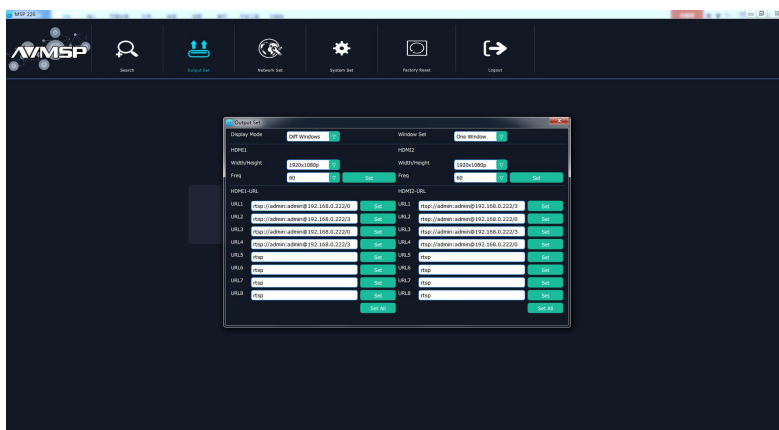
Then it will search the device, and show the device name, device number and connect information after search, as shown in the figure below:



Finally, click the device to connect, as shown in the figure below:

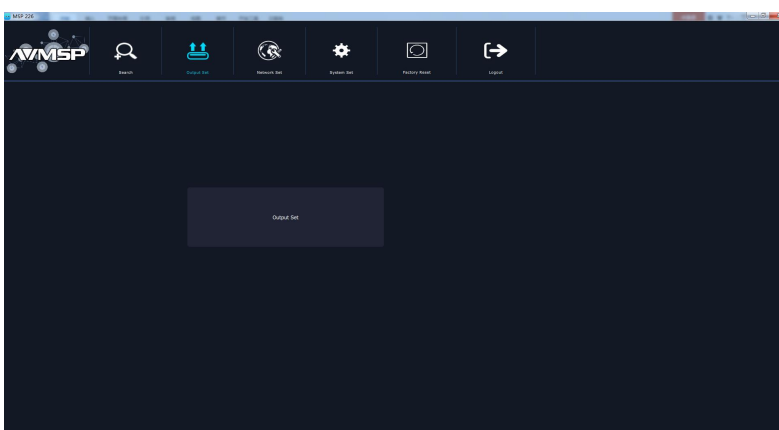


The software will enter to the Output Set interface after connection, as shown in the figure below:

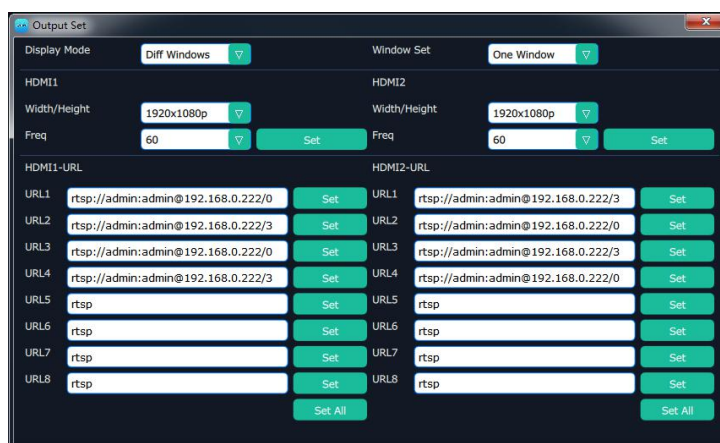


Output Set

Click “Output Set”, and enter to the interface as follows:



Click “Output Set”, and pop-up window as follows:



Display Mode: Click the pull-down menus, diff windows and same windows can be selected.

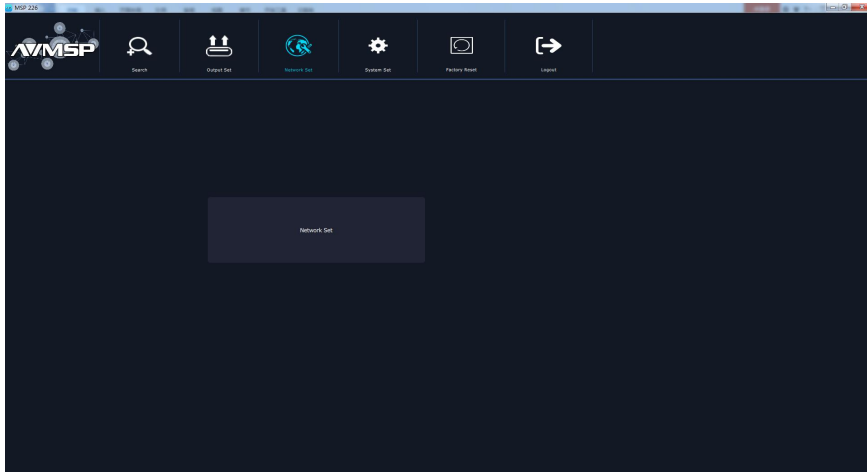
Window Set: Click the pull-down menus, one window, four windows and eight windows can be selected.

HDMI1/HDMI2: Set the width/height of HDMI1/HDMI2, click “Set” to confirm.

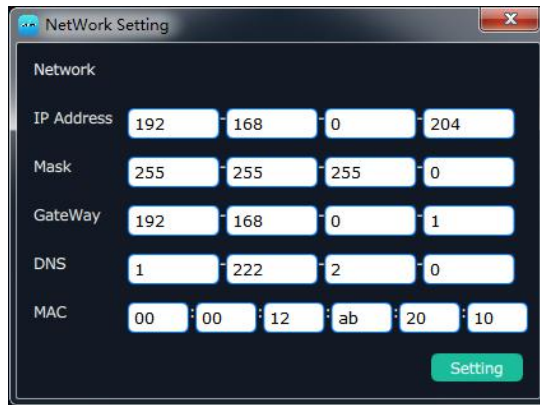
HDMI1-URL/HDMI2-URL: Check the address of the network camera, and input the address in URL box.

Network Set

Click “Network Set”, and enter the interface as follows:

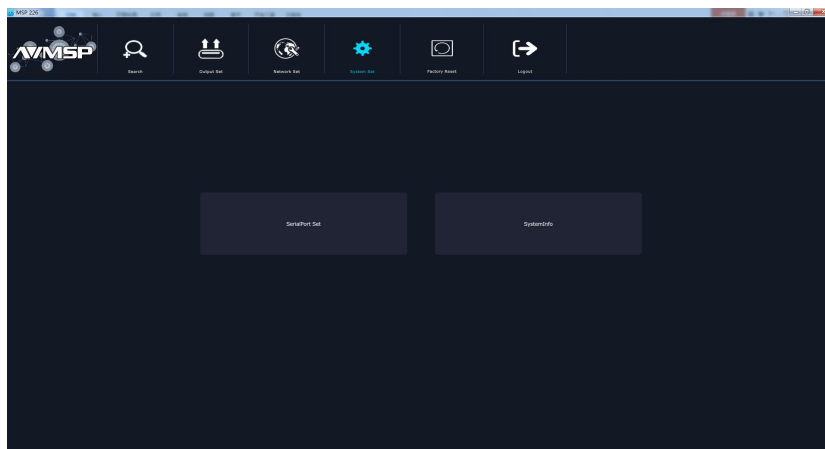


Click “Network Set”, user can set IP address, Mask, GateWay, DNS and MAC. As shown in the figure below:



System Set

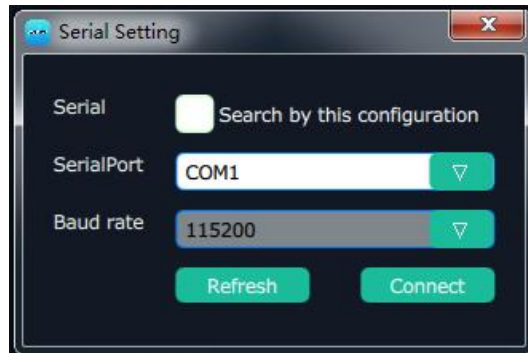
Click “System Set”, and enter the interface as follows:



SerialPort Set and System Info are included in system set, specific as follows:

SerialPort Set

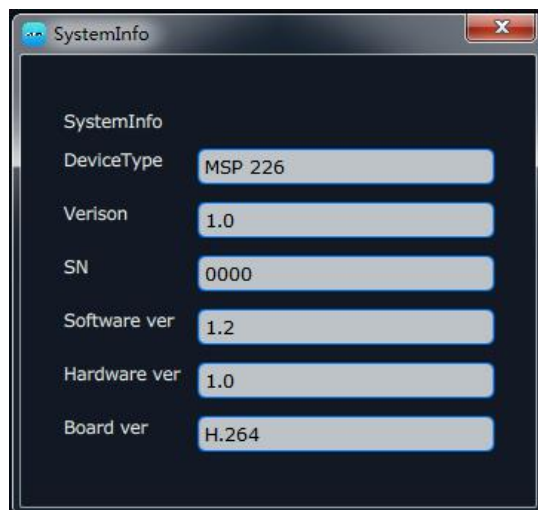
Click “SerialPort Set”, and pop-up window as follows:



Select the corresponding serial number. If select “Search by this configuration”, the software will search all the devices with corresponding serial number.

System Info

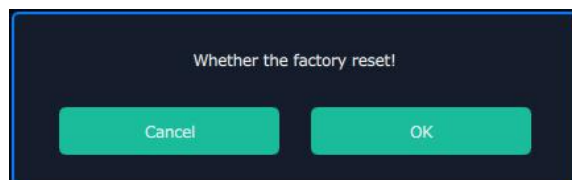
Click “System Info”, and pop-up window as follows:



Display the device type, software version, serial number, software, hardware and board version.

Factory Reset

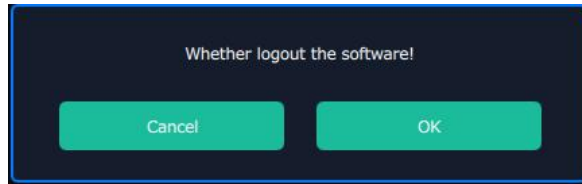
Click “Factory Reset”, and pop-up window as follows:



Select “OK”, all the settings will be recover to factory setting.

Logout

Click the “Logout”, and enter the interface as follows:



Click “OK” will logout the software.

Contact Information

Warranty:

All video products are designed and tested to the highest quality standard and backed by a full 3 years parts and labor warranty. Warranties are effective upon delivery date to customer and are non-transferable. RGBlink warranties are only valid to the original purchase/owner. Warranty related repairs include parts and labor, but do not include faults resulting from user negligence, special modification, lighting strikes, abuse(drop/crush), and/or other unusual damages.

The customer shall pay shipping charges when unit is returned for repair.

Headquarter: S603~604 Weiye Building Torch Hi-Tech Industrial Development Zone Xiamen, Fujian Province, P.R.C

- **Tel:** +86-592-5771197
- **Fax:** +86-592-5788216
- **Customer Hotline:** 4008-592-315
- **Web:**
 - ~ <http://www.rgblink.com>
 - ~ <http://www.rgblink.cn>
- **E-mail:** support@rgblink.com